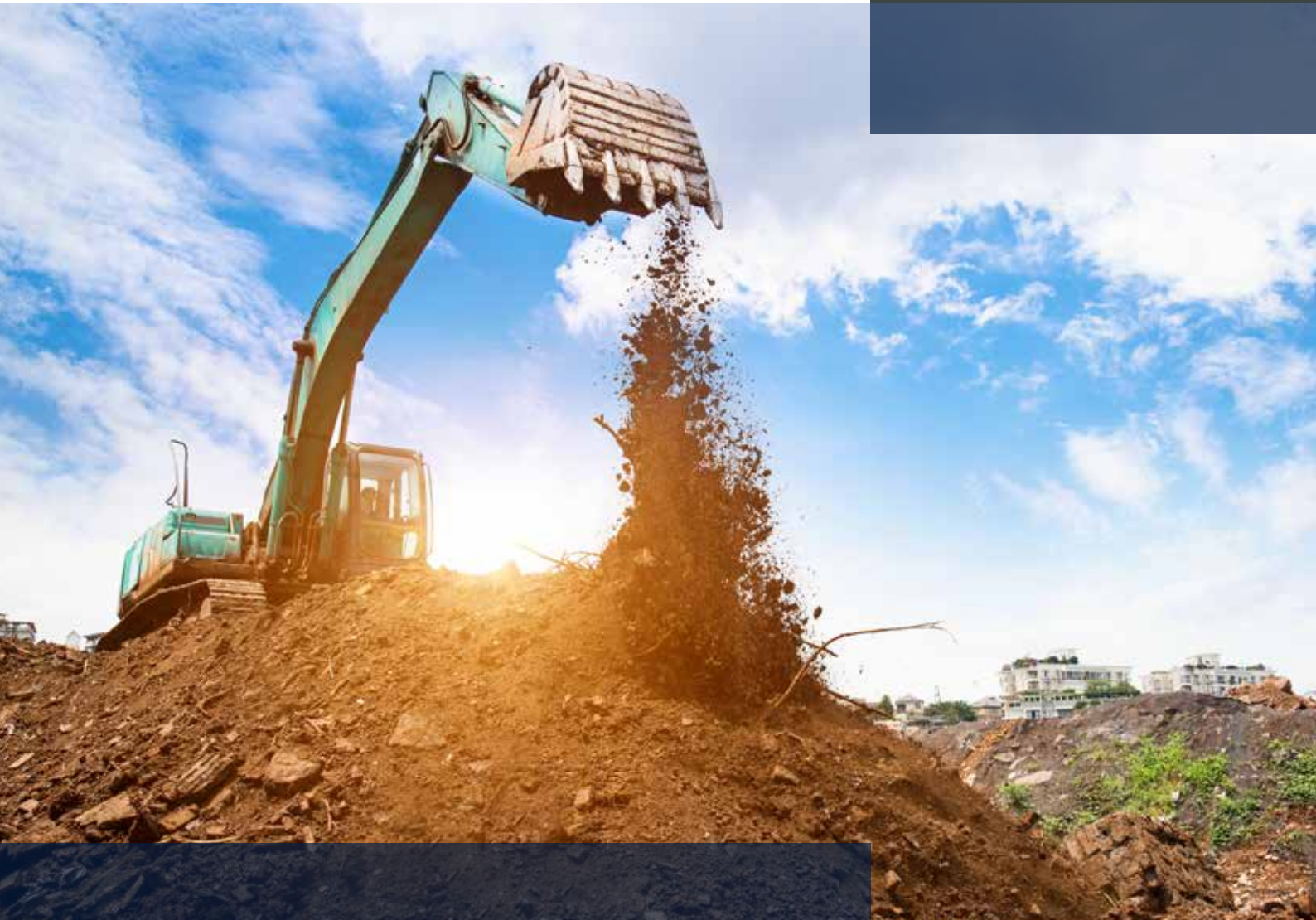




WESTBLUE
CONSULTING

Mining Solution



Geo-Mining Portal
Mining Cadastral Solution
Solid Minerals Portal



The mining sector is a high-potential source of revenue generation for countries endowed with natural resources. However, many nations have struggled to derive maximum benefits from mining due to a variety of challenges and issues such as burdensome bureaucratic process, a lack of transparency, the loss of key data, incomplete and inaccurate information and illegal occupancy by unlicensed miners.

West Blue Consulting has developed a suite of mining solutions that enable the end-to-end automation of mining and mineral licensing applications and approval processes, benefitting all stakeholders in the mining industry. The solutions have can be easily configured, adapted and fit for



Geo-Mining Portal

Who is it for

Mining regulators, policy makers, other government ministries, departments and agencies, mining investors, mining title holders, research institutes, traders, chambers of mines.

Overview

The Geo-Mining Portal is a Geographical Information System (GIS) enabled central repository platform that serves as a single point of disseminating mining information as both geospatial and non-spatial data are collated, analysed, stored and managed. It is a highly scalable, robust and flexible application that supports data integration from different sources for the purposes of disseminating information through both maps or spatial reporting.

Key Features

- Geo-mining application
- Geo-mining investor
- Executive dashboard
- Geospatial intelligence reporting
- Field data collection apps
- Content management
- User management
- User registration
- Secure APIs for 3rd party integration

- Interactive web map
- Mining basic dataset web map
- Landbase web map
- Geology web map
- Cadastre web map
- Border web map
- Admin boundary web map
- Mining operations web map
- Hydrology web map

Delivery Model

- On-premise model
- Software as a service(SAAS)

Benefits

For Governments

- Authorities are able to view holistic report on minerals and mines related transaction
- Helps mining authorities improve decision making process
- Improves compliance and increases transparency
- Manages geospatial data to evaluate mining conditions and predicts trends
- Improves collaboration amongst MDAs as it facilitates the usage and sharing of geospatial content, maps, and data within and amongst MDAs as well as the public

For Mining Community

- Enables easy access to mining related information such as location of mineral occurrences, areas licensed etc.
- Helps investors gain insights into analysed data to make well informed decisions
- Increases business opportunities for the mining community
- Improves collaboration and information
- Increases investor confidence and interest to invest

A vertical silhouette of a mining excavator on the left side of the page, set against a dark blue background. The excavator's arm and bucket are visible, extending upwards.

Mining Cadastral Solution

Who is it for

Government ministries, departments and agencies issuing mineral rights and mining licenses

Overview

The Mining Cadastral Solution is a web based application integrated with GIS capabilities. The solution provides a platform for investors, mining operators, corporate organisations and Individuals to lodge online application for mineral titles-related transactions. Users are able to select a free cadastral unit area of interest from the map and upon selection, the information is saved and submitted along with other details and supporting documents for processing and issuance in real time.

Key Features

- Mining title licensing
- Cadastre map
- User registration
- Content management
- Document management
- Workflow management
- User management
- Dashboard
- Reports
- GIS integration
- Electronic payment services
- Notification and alert services
- Live chat support
- Secure APIs for 3rd party integration

Delivery Model

- On-premise model
- Software as a service(SAAS)

Benefits

- Improves efficiency and productivity among staff
- Eliminates redundancy and delays in processing application
- Ensures complete automation of mining title applications and approval processes
- Enhances data quality and credibility of mineral titles and associated minerals statistics
- Timely reporting, accountability and transparency in the collection of associated revenue
- Reduces cost of application as logistic costs become negligible
- Increases revenue generation



Geo-Mining Portal

Who is it for

Mining regulators, policy makers, other government ministries, departments and agencies, mining investors, mining title holders, research institutes, traders, chambers of mines.

Overview

The Geo-Mining Portal is a Geographical Information System (GIS) enabled central repository platform that serves as a single point of disseminating mining information as both geospatial and non-spatial data are collated, analysed, stored and managed. It is a highly scalable, robust and flexible application that supports data integration from different sources for the purposes of disseminating information through both maps or spatial reporting.

Key Features

- Geo-mining application
- Geo-mining investor
- Executive dashboard
- Geospatial intelligence reporting
- Field data collection apps
- Content management
- User management
- User registration
- Secure APIs for 3rd party integration

- Interactive web map
- Mining basic dataset web map
- Landbase web map
- Geology web map
- Cadastre web map
- Border web map
- Admin boundary web map
- Mining operations web map
- Hydrology web map

Delivery Model

- On-premise model
- Software as a service(SAAS)

Benefits

For Governments

- Authorities are able to view holistic report on minerals and mines related transaction
- Helps mining authorities improve decision making process
- Improves compliance and increases transparency
- Manages geospatial data to evaluate mining conditions and predicts trends
- Improves collaboration amongst MDAs as it facilitates the usage and sharing of geospatial content, maps, and data within and amongst MDAs as well as the public

For Mining Community

- Enables easy access to mining related information such as location of mineral occurrences, areas licensed etc.
- Helps investors gain insights into analysed data to make well informed decisions
- Increases business opportunities for the mining community
- Improves collaboration and information
- Increases investor confidence and interest to invest



Solid Minerals Portal

Who is it for

Mining regulators, ministry department and agencies, mining companies, mining professionals, investors, traders, chambers of mines and other mining stakeholders

Overview

The Solid Minerals Portal is a one-stop shop for the dissemination of minerals and mining information to all stakeholders in the mining industry. The portal has GIS integration capabilities with an interface for the lodgment of environmental applications, artisanal applications, explosives licensing and permits applications, mines operational applications, mineral production returns and online payment of royalty fees in addition to other transactional fee.

The platform maintains a comprehensive database of information stored in a central repository for easy processing, management, transparency and accountability.

Key Features

- Application licensing and certification
- Marketplace
- User registration
- Content management
- Document management
- Workflow management
- User management
- Dashboard
- Reports
- GIS integration
- Electronic payment services
- Notification and alert services
- Live chat support
- Secure APIs for 3rd party Integration

Delivery Model

- On-premise model
- Software as a service(SAAS)

Benefits

For Governments

- Improves revenue generation while eliminating leakages by monitoring operators' mining activities
- Enhances prompt decision making process through timely and accurate reporting and data available in real time
- Improves the effectiveness of processing mining related applications and enforcing mining regulations
- Promotes effective collaboration between all mining stakeholders
- Improves transparency, governance and efficiency thereby increasing investor confidence
- Creates jobs for local communities

For Citizenry and Investors

- Enhances ease of doing business in the mining industry by eliminating redundancies and associated costs and increasing returns on investment (ROI)
- Enables access to real time information enhancing decision making
- Enhances data quality and customer satisfaction
- Provides an electronic platform for lodging applications
- Facilitates payment for solid mineral transactions
- Increases business opportunities for mining communities



**THANK
YOU**